

secret forest

for ensemble (2008 revised 05/feb/2009)

Dai Fujikura

Co-Commissioned by Kioi Hall and Izumi Hall.

Première:

November 5th 2008 Kioi Hall, Tokyo
"secret forest" for ensemble (world premiere)
performed by Art Respirant conducted by Ken Takaseki

February 5th 2009 Izumi Hall, Osaka
"secret forest" for ensemble
performed by Izumi Sinfonietta conducted by Tatsuya Shimono

Instruments (layout):

O
N

S
T
R
I
N
G
S

4 Violins
2 Violas
2 Cellos
1 Double Bass

For ALL Strings: Use plastic (not metal) practice-mutes. The sound of the muted strings must “match” when played together.

**All Strings need hard plectrums.
For cello and double bass: Credit card-like plastic card will also work well.**

I
N

A
U
D
I
T
O
R
I
U
M

1 Flute (doubling rainstick)
1 Oboe (doubling rainstick)
1 Clarinet (B-flat) (doubling rainstick)
1 Bassoon

2 Horns (F) (doubling rainstick)
1 Trumpet (B-flat) (doubling rainstick) also needs Harmon, Practice, Straight mutes
1 Trombone (doubling rainstick) also needs Velvet and Practice mutes

• ***The score is in C***

This work needs 7 Rainsticks; ideally each rainstick should be different in size (but all relatively LARGE size) and sonority.

The piece is designed to be performed/conducted without monitors for non-stage musicians.

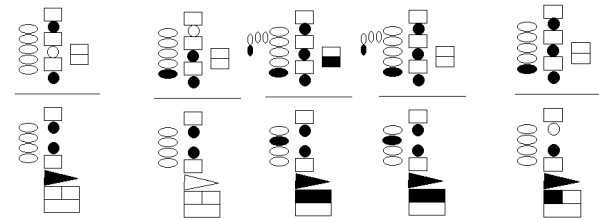
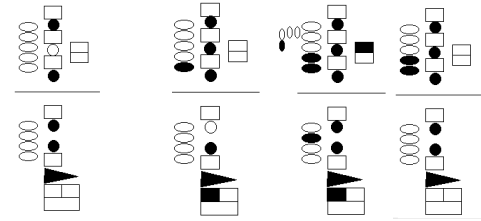


Cue for the musicians in the auditorium:

This piece is designed so that the conductor can turn to the auditorium to direct the off stage players.

Multiphonics:

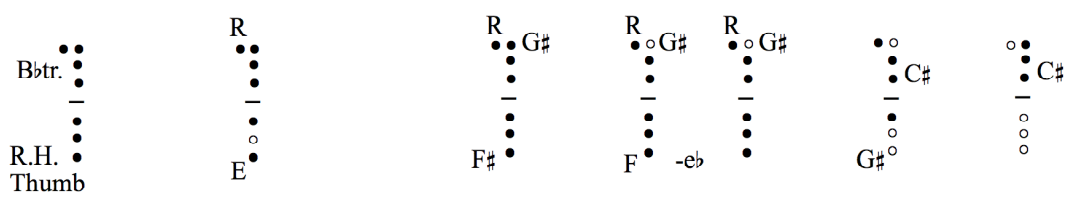
Bassoon



Clarinet (written pitch)

Soft, clear pitched multiphonics (in "p")

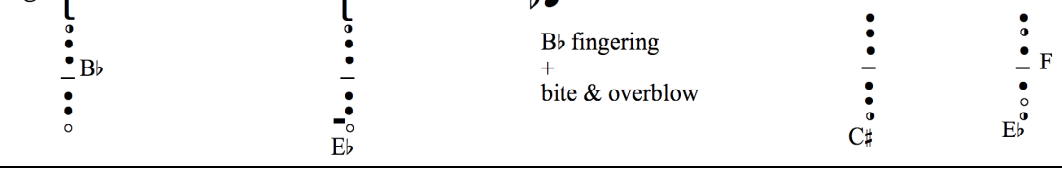
multiphonics (ugly)



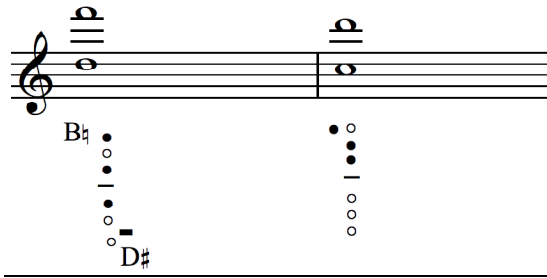
Oboe

clear pitched multiphonics (in "p")

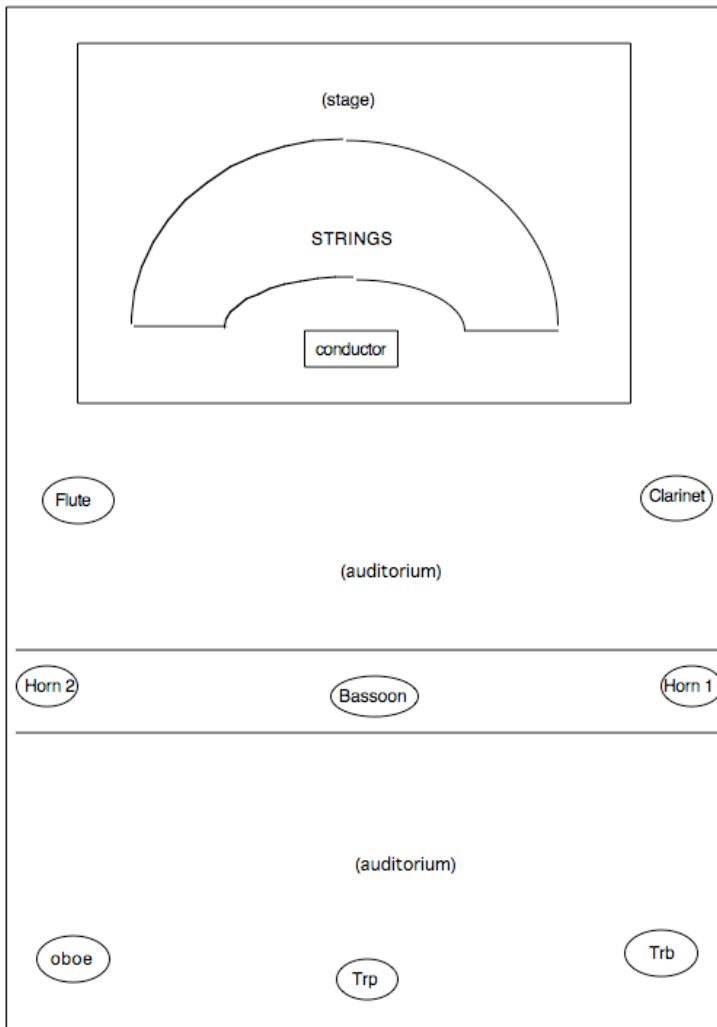
multiphonics (ugly)



Flutes



Seating plan:



As a general rule the musicians in the auditorium play using quieter dynamics than the on stage strings.