

ice

for ensemble (2009/2010)

D a i F u j i k u r a

Co-commissioned by the Barlow Endowment for Music Composition at Brigham Young University and the International Contemporary Ensemble (ICE)

Instrumentation (handheld percussions: see “percussion section” for details):

- 1 Flute (doubling Alto Flute and Bass Flute)
- 1 Alto Flute (doubling Piccolo and 1 Snail-Shell Pod Rattle)
- 1 Oboe (doubling 1 Spring Drum and 1 small Pod Rattle)
- 1 Clarinet in B-flat (doubling 1 small Rainstick)
- 1 Bassoon (doubling 1 large Pod Rattle)
- 1 Percussion player
- 1 Acoustic Guitar (amplified in 2 places of the guitar, 1 microphone pointing at neck, 1 pointing at sound hole, and turning, see below)
- 1 Violin
- 1 Viola
- 1 Cello
- 1 Double Bass

Percussions for percussionist

- 1 Sea-Shells Wind Chimes

- 1 Water Drum

Almglocken:



- 1 Large Sizzle Rivet Cymbal

- 1 Dulcimer (needs these pitches):



Marble in the Bowls (needs these pitches):



- 1 Kalimba (amplified) – turning:



Create this scale using the mixture of "metal pipes", "wooden bars" and "flower-pots".



Hand-held Percussions for woodwinds:

1 Snail-Shell Pod Rattle



2 Pod Rattles (small and large)



1 Spring Drum

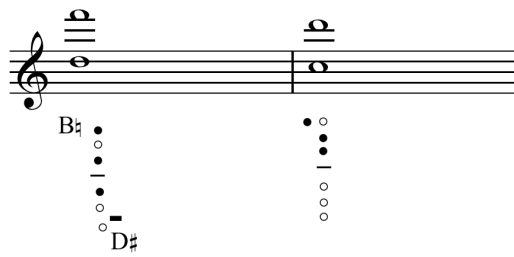


1 small rainstick (can be held in one hand)

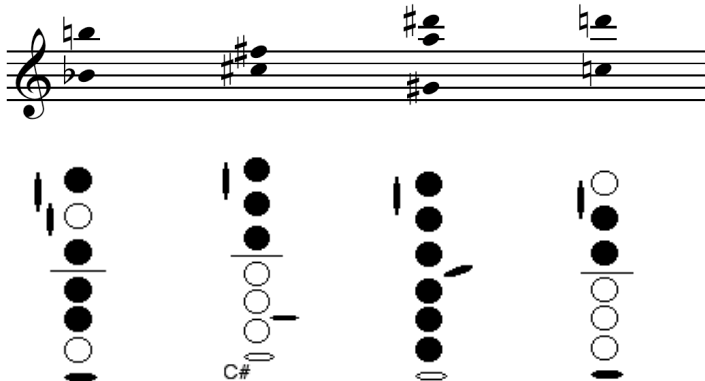


Woodwinds Multiphonics (ALL in written pitches):

Flute/Alto Flute



Bass Flute:



OBOE:



[illegible]

Guitar tuning:



General Point:

Accidentals (including grace notes) only affect the pitch to which they directly refer, not other octaves, for the duration of the bar in which the accidental is written.

Do NOT vibrato on gliss. or port.

All arpeggios and grace notes must be played rapidly.

STRINGS:

S.P.= sul pont.

P.O.= position ordinary

S.T.= sul tasto

Make a difference between **Gliss.** and **Port.**

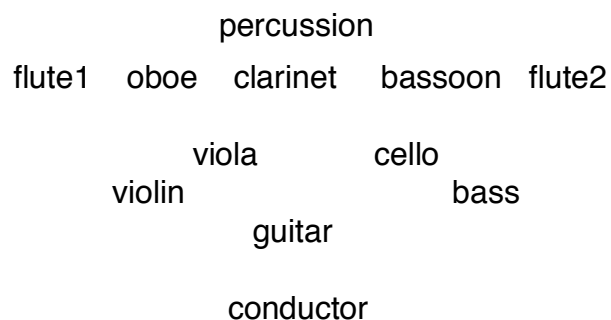
Gliss. = shift the pitch immediately (and travel during the full length of the note duration).

Port. = shift the pitch just before you go to next note.

Use plastic (not metal) practice-mutes. The sound of the muted strings must “match” when played together.

All need hard **plectrums**.

Seating plan:



Dedicated to ICE members: Claire Chase, Eric Lamb, Joshua Rubin, James Austin Smith, Rebekah Heller, Jennifer Curtis, David Bowlin, Maiya Papach, Wendy Richman, Katinka Kleijn, Kivie Cahn-Lipman, Randall Zigler, Daniel Lippel and David Schotzko and to ICE's beloved Board President Andreas Waldburg-Wolfegg on the occasion of his 44th birthday

First performance: April 27th 2010, (le) Poisson Rouge New York, USA
Performed by I.C.E.
Conducted by Matthias Pintscher